

Brief Instruction

Plug decoder/encoder into USB port



- * Windows 7 users have to install driver prior. Refer to readme.txt file for details.
- * Windows 10 users do not need install driver, system already has necessary one.

Run the application

and wait for 3 minutes until code operation is available
 (why to wait? see limitations following in this document)

The screenshot shows the Jet Code application window with the following elements and annotations:

- ① Select manufacturer:** Points to the 'SIEMENS' dropdown menu in the 'Injector type' field.
- ② Type injector number:** Points to the text input field containing '03L130277B'.
- ③ Type injector code:** Points to the 'Injector code' field containing '96FFFF'.
- ④ Press Decode button:** Points to the 'Decode' button.
- ⑤ Adjust code parameters:** Points to the sliders for 'VL', 'EM', 'LL', and 'VE'.
- ⑥ Press Encode button:** Points to the 'Encode' button.
- ⑦ Use generated code:** Points to the 'New code' field containing '96FFFF'.

The application interface includes a status bar at the bottom: Decoder : Jet Code v0.6 @ COM6 : 9981 codes left : 1 codes available

Over 1500 types of Bosch, Delphi, Denso and Siemens injectors are supported.

* Download and run the application without decoder/encoder to see which injectors are supported.

* ② Type any part of injector number for searching.

Brief Instruction

Limitations

In order to prevent using decoder/encoder for brute force extraction of all possible codes, following limitations are applied.

10000



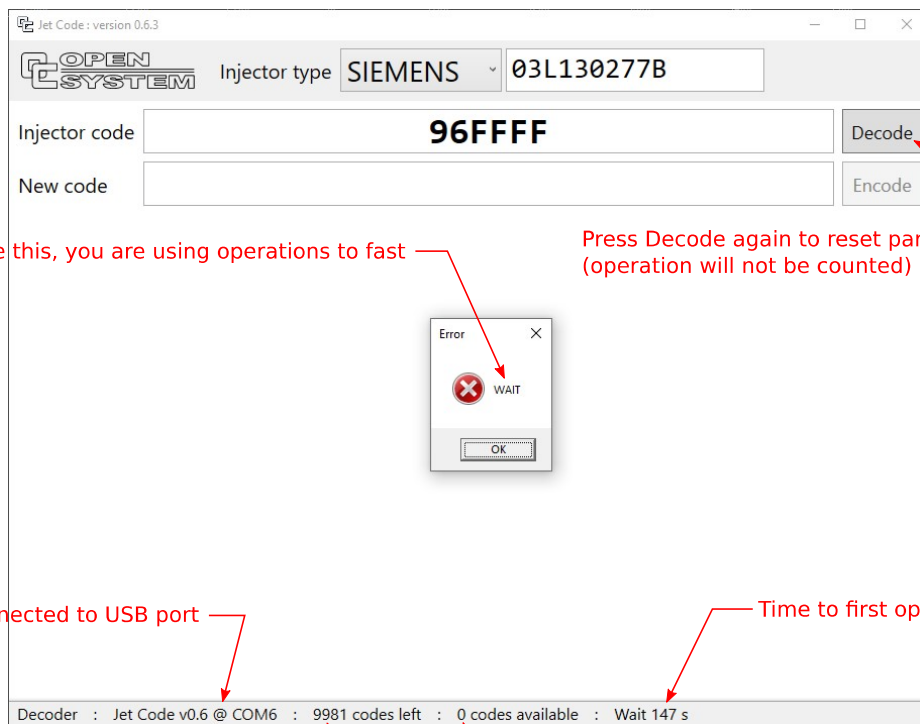
The device has limited total number of operations you can perform (usually 10000). After 10000 operations the device is exhausted and it can not process codes any more. You can dispose exhausted device.

One operation is either act of decoding code into parameters or act of obtaining new code for parameters changed. If you decode again just entered code or obtain new code the same as code entered, operation is not counted, counter of available operations is not decremented.

3 min



Further more all 10000 operations are not available at once. After decoder/encoder is on, one operation become available every 3 minutes. Available operations are accumulated, so after one hour idling of the device on you will have 20 operations available. No more than 30 operations can be accumulated. Available operations accumulation does not depend on whether application is running or not, only the device must be continuously on.



If you see this, you are using operations to fast

Press Decode again to reset parameters to original (operation will not be counted)

Device is connected to USB port

Time to first operation available

Number of operations available total

Number of operations available now

- * Leave device in USB port for some time to accumulate operations.
- * Accumulated operations are lost with power off.